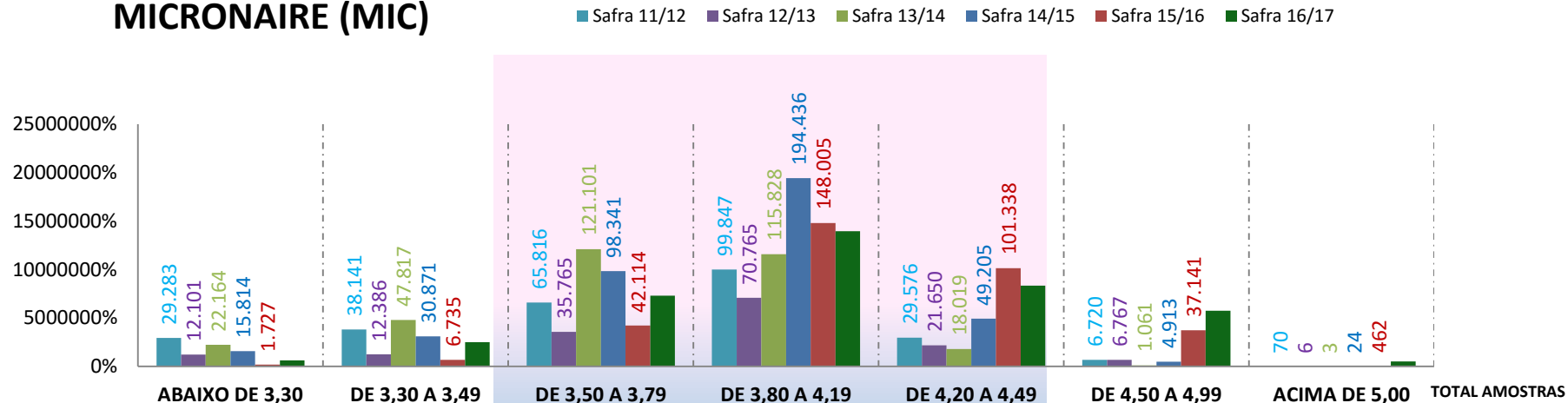
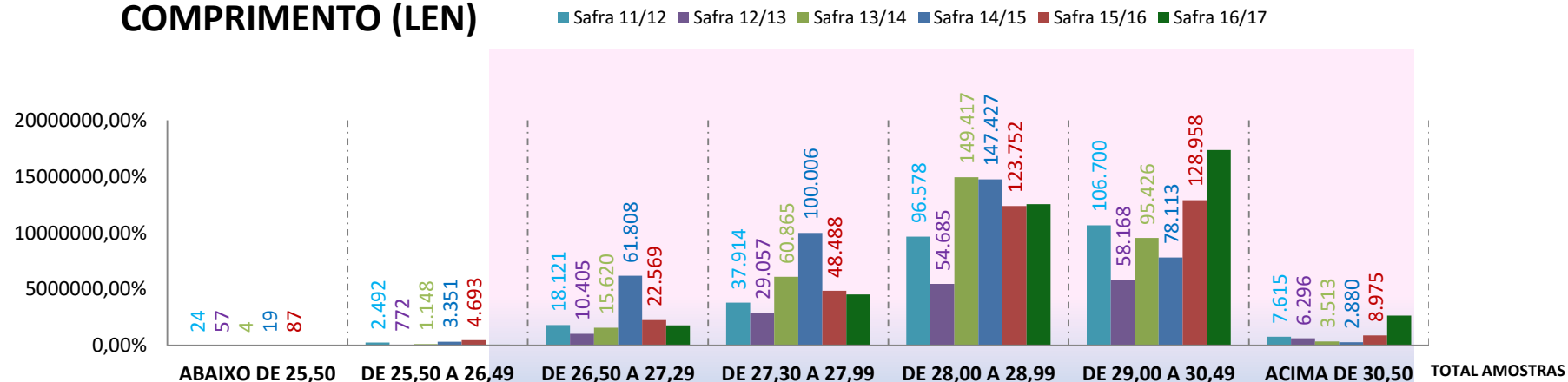


### MICRONAIRE (MIC)



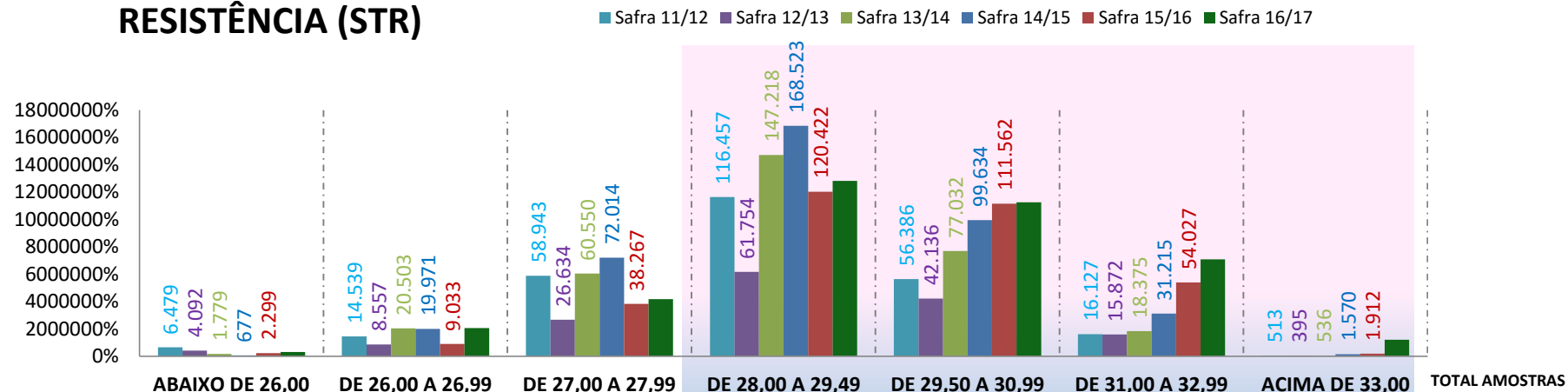
Safra	ABAIXO DE 3,30	DE 3,30 A 3,49	DE 3,50 A 3,79	DE 3,80 A 4,19	DE 4,20 A 4,49	DE 4,50 A 4,99	ACIMA DE 5,00	TOTAL AMOSTRAS
Safra 11/12	29.283	38.141	65.816	99.847	29.576	6.720	70	<b>269.453</b>
Safra 12/13	12.101	12.386	35.765	70.765	21.650	6.767	6	<b>159.440</b>
Safra 13/14	22.164	47.817	121.101	115.828	18.019	1.061	3	<b>325.993</b>
Safra 14/15	15.814	30.871	98.341	194.436	49.205	4.913	24	<b>393.604</b>
Safra 15/16	1.727	6.735	42.114	148.005	101.338	37.141	462	<b>337.522</b>
Safra 16/17	6.319	24.909	72.948	139.473	83.245	57.333	5.108	<b>389.335</b>

### COMPRIMENTO (LEN)



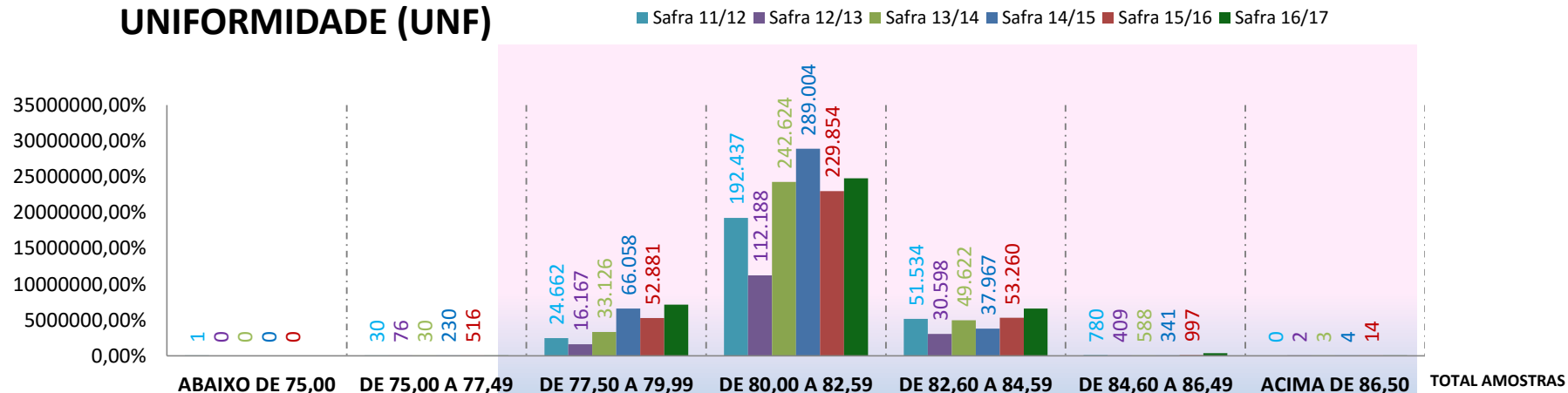
Safra	ABAIXO DE 25,50	DE 25,50 A 26,49	DE 26,50 A 27,29	DE 27,30 A 27,99	DE 28,00 A 28,99	DE 29,00 A 30,49	ACIMA DE 30,50	TOTAL AMOSTRAS
Safra 11/12	24	2.492	18.121	37.914	96.578	106.700	7.615	<b>269,44</b>
Safra 12/13	57	772	10.405	29.057	54.685	58.168	6.296	<b>159,44</b>
Safra 13/14	4	1.148	15.620	60.865	149.417	95.426	3.513	<b>325.993</b>
Safra 14/15	19	3.351	61.808	100.006	147.427	78.113	2.880	<b>393.604</b>
Safra 15/16	87	4.693	22.569	48.488	123.752	128.958	8.975	<b>337.522</b>
Safra 16/17	0	702	17.893	45.337	125.431	173.583	26.389	<b>389.335</b>

## RESISTÊNCIA (STR)



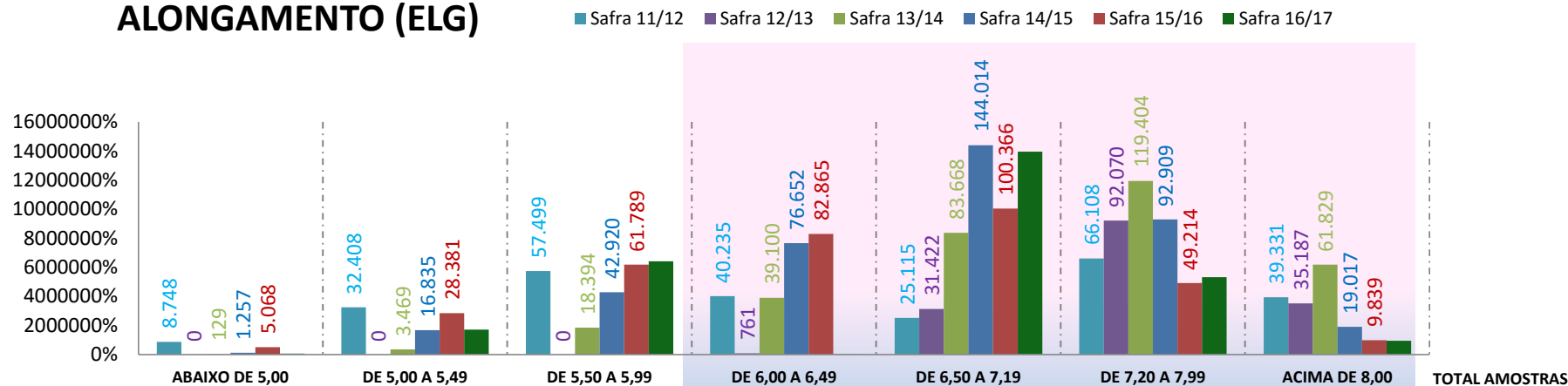
Safra	ABAIXO DE 26,00	DE 26,00 A 26,99	DE 27,00 A 27,99	DE 28,00 A 29,49	DE 29,50 A 30,99	DE 31,00 A 32,99	ACIMA DE 33,00	TOTAL AMOSTRAS
Safra 11/12	6.479	14.539	58.943	116.457	56.386	16.127	513	269.444
Safra 12/13	4.092	8.557	26.634	61.754	42.136	15.872	395	159.440
Safra 13/14	1.779	20.503	60.550	147.218	77.032	18.375	536	325.993
Safra 14/15	677	19.971	72.014	168.523	99.634	31.215	1.570	393.604
Safra 15/16	2.299	9.033	38.267	120.422	111.562	54.027	1.912	337.522
Safra 16/17	3.210	20.579	41.695	128.341	112.632	70.807	12.071	389.335

## UNIFORMIDADE (UNF)



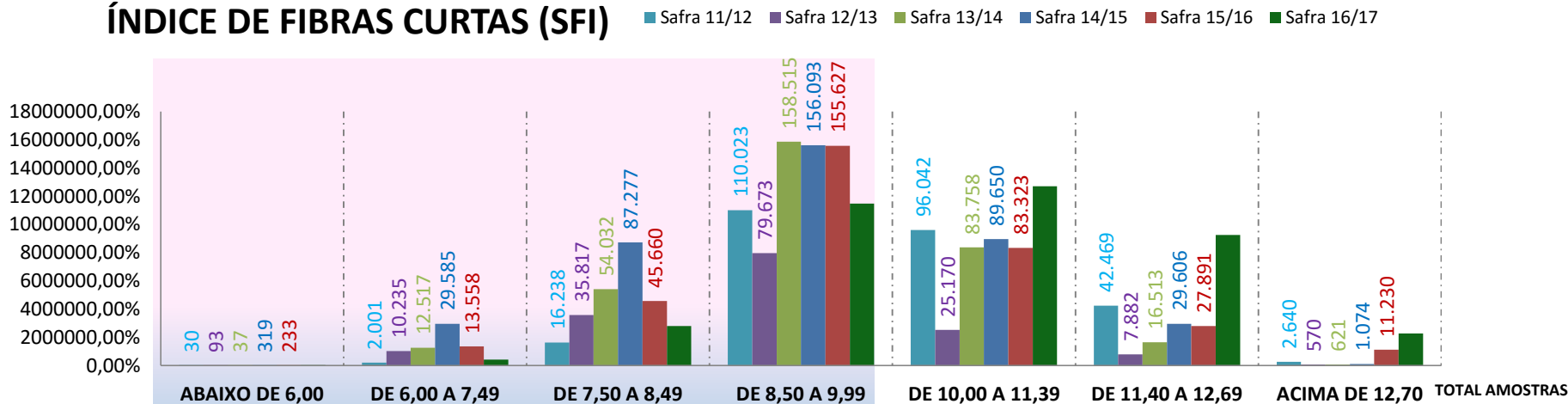
Safra	ABAIXO DE 75,00	DE 75,00 A 77,49	DE 77,50 A 79,99	DE 80,00 A 82,59	DE 82,60 A 84,59	DE 84,60 A 86,49	ACIMA DE 86,50	TOTAL AMOSTRAS
Safra 11/12	1	30	24.662	192.437	51.534	780	0	269.444
Safra 12/13	0	76	16.167	112.188	30.598	409	2	159.440
Safra 13/14	0	30	33.126	242.624	49.622	588	3	325.993
Safra 14/15	0	230	66.058	289.004	37.967	341	4	393.604
Safra 15/16	0	516	52.881	229.854	53.260	997	14	337.522
Safra 16/17	0	366	71.555	247.918	65.863	3.595	38	389.335

## ALONGAMENTO (ELG)



Harvest Year	ABAIXO DE 5,00	DE 5,00 A 5,49	DE 5,50 A 5,99	DE 6,00 A 6,49	DE 6,50 A 7,19	DE 7,20 A 7,99	ACIMA DE 8,00	TOTAL AMOSTRAS
Safra 11/12	8.748	32.408	57.499	40.235	25.115	66.108	39.331	269.444
Safra 12/13	0	0	0	761	31.422	92.070	35.187	159.440
Safra 13/14	129	3.469	18.394	39.100	83.668	119.404	61.829	325.993
Safra 14/15	1.257	16.835	42.920	76.652	144.014	92.909	19.017	393.604
Safra 15/16	5.068	28.381	61.789	82.865	100.366	49.214	9.839	337.522
Safra 16/17	705	17.113	64.211	105	139.598	53.182	9.418	284.332

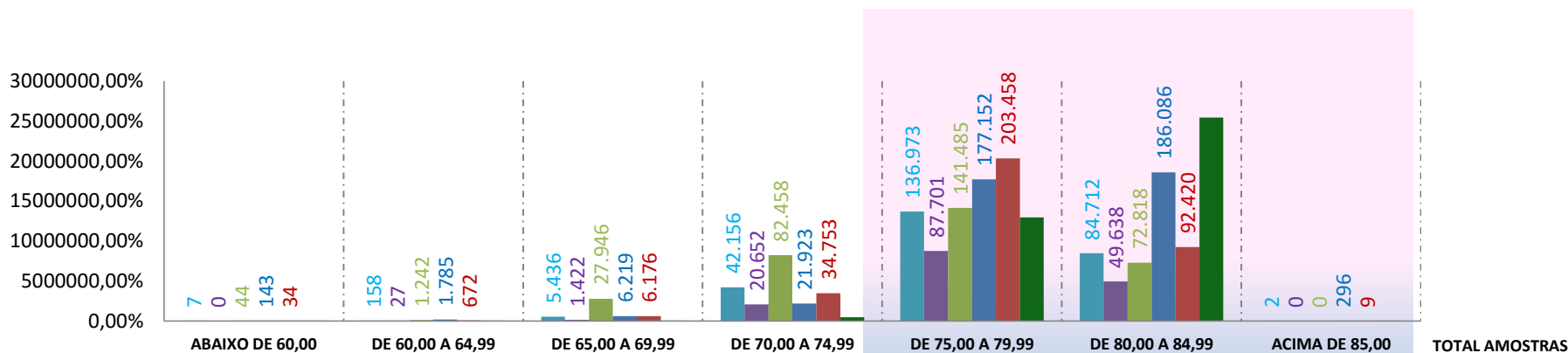
## ÍNDICE DE FIBRAS CURTAS (SFI)



Harvest Year	ABAIXO DE 6,00	DE 6,00 A 7,49	DE 7,50 A 8,49	DE 8,50 A 9,99	DE 10,00 A 11,39	DE 11,40 A 12,69	ACIMA DE 12,70	TOTAL AMOSTRAS
Safra 11/12	30	2.001	16.238	110.023	96.042	42.469	2.640	269.444
Safra 12/13	93	10.235	35.817	79.673	25.170	7.882	570	159.440
Safra 13/14	37	12.517	54.032	158.515	83.758	16.513	621	325.993
Safra 14/15	319	29.585	87.277	156.093	89.650	29.606	1.074	393.604
Safra 15/16	233	13.558	45.660	155.627	83.323	27.891	11.230	337.522
Safra 16/17	115	4.252	27.969	114.768	127.018	92.457	22.756	389.335

### GRAU DE REFLECTÂNCIA (RD)

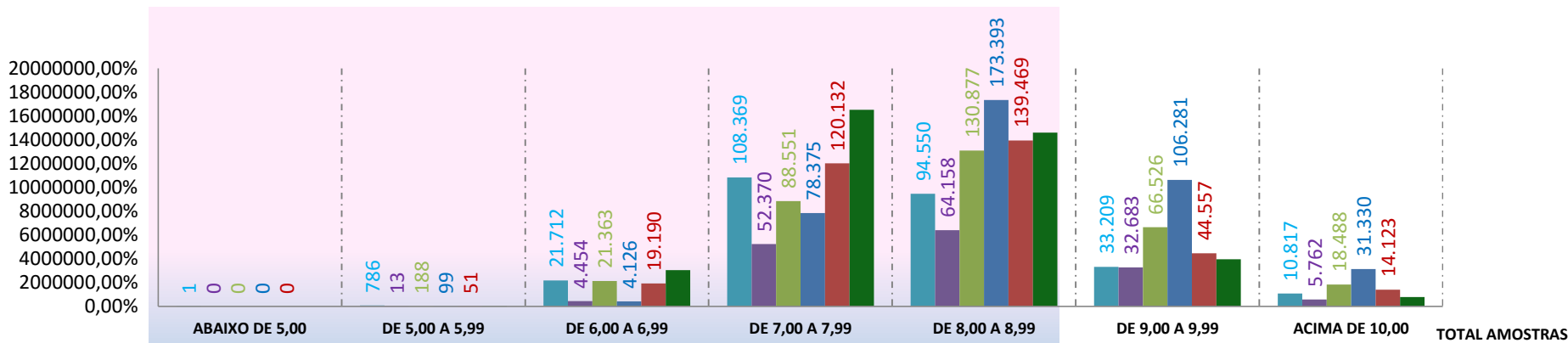
■ Safra 11/12 ■ Safra 12/13 ■ Safra 13/14 ■ Safra 14/15 ■ Safra 15/16 ■ Safra 16/17



Grupos	Safra 11/12	Safra 12/13	Safra 13/14	Safra 14/15	Safra 15/16	Safra 16/17	TOTAL AMOSTRAS
ABAIXO DE 60,00	7	0	44	143	34	0	
DE 60,00 A 64,99	158	27	1.242	1.785	672	0	
DE 65,00 A 69,99	5.436	1.422	27.946	6.219	6.176	491	
DE 70,00 A 74,99	42.156	20.652	82.458	21.923	34.753	4.789	
DE 75,00 A 79,99	136.973	87.701	141.485	177.152	203.458	129.634	
DE 80,00 A 84,99	84.712	49.638	72.818	186.086	92.420	254.377	
ACIMA DE 85,00	2	0	0	296	9	15	
<b>TOTAL AMOSTRAS</b>	<b>269.444</b>	<b>159.440</b>	<b>325.993</b>	<b>393.604</b>	<b>337.522</b>	<b>389.335</b>	

### GRAU DE AMARELAMENTO (+B)

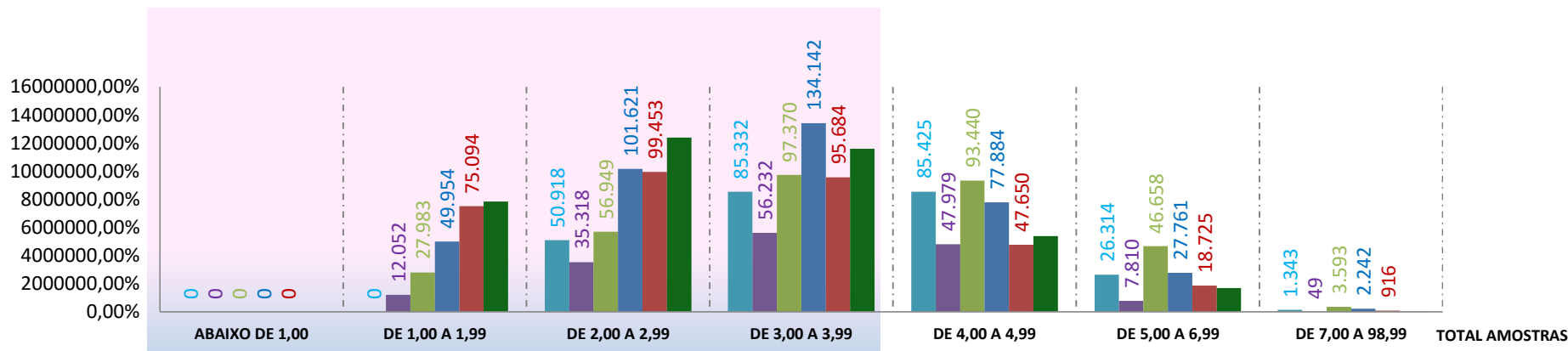
■ Safra 11/12 ■ Safra 12/13 ■ Safra 13/14 ■ Safra 14/15 ■ Safra 15/16 ■ Safra 16/17



Grupos	Safra 11/12	Safra 12/13	Safra 13/14	Safra 14/15	Safra 15/16	Safra 16/17	TOTAL AMOSTRAS
ABAIXO DE 5,00	1	0	0	0	0	0	
DE 5,00 A 5,99	786	13	188	99	51	3	
DE 6,00 A 6,99	21.712	4.454	21.363	4.126	19.190	30.461	
DE 7,00 A 7,99	108.369	52.370	88.551	78.375	120.132	165.303	
DE 8,00 A 8,99	94.550	64.158	130.877	173.393	139.469	146.160	
DE 9,00 A 9,99	33.209	32.683	66.526	106.281	44.557	39.528	
ACIMA DE 10,00	10.817	5.762	18.488	31.330	14.123	7.880	
<b>TOTAL AMOSTRAS</b>	<b>269.444</b>	<b>159.440</b>	<b>325.993</b>	<b>393.604</b>	<b>337.522</b>	<b>389.335</b>	

## GRAU DE FOLHA (LEAF)

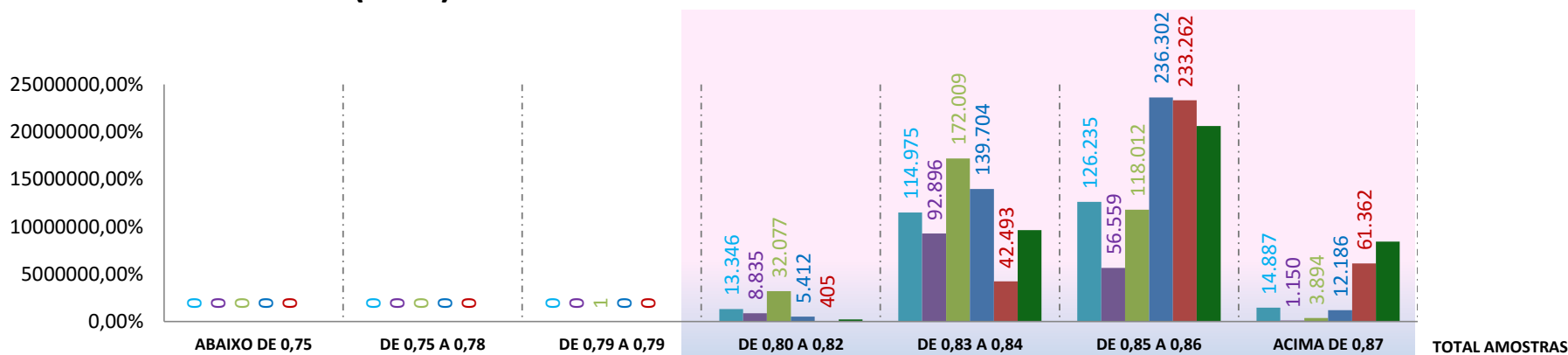
■ Safra 11/12 ■ Safra 12/13 ■ Safra 13/14 ■ Safra 14/15 ■ Safra 15/16 ■ Safra 16/17



Safra	ABAIXO DE 1,00	DE 1,00 A 1,99	DE 2,00 A 2,99	DE 3,00 A 3,99	DE 4,00 A 4,99	DE 5,00 A 6,99	DE 7,00 A 98,99	TOTAL AMOSTRAS
Safra 11/12	0	20.11	50.918	85.332	85.425	26.314	1.343	269,444
Safra 12/13	0	12.052	35.318	56.232	47.979	7.810	49	159,440
Safra 13/14	0	27.983	56.949	97.370	93.440	46.658	3.593	325,993
Safra 14/15	0	49.954	101.621	134.142	77.884	27.761	2.242	393,604
Safra 15/16	0	75.094	99.453	95.684	47.650	18.725	916	337,522
Safra 16/17	0	78.444	123.904	116.089	53.831	16.886	181	389,335

## MATURIDADE (MAT)

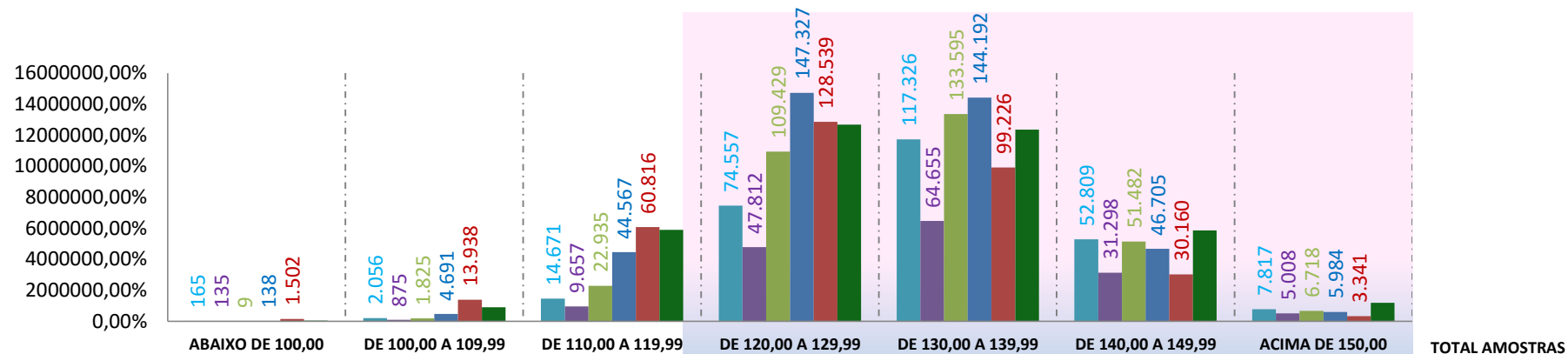
■ Safra 11/12 ■ Safra 12/13 ■ Safra 13/14 ■ Safra 14/15 ■ Safra 15/16 ■ Safra 16/17



Safra	ABAIXO DE 0,75	DE 0,75 A 0,78	DE 0,79 A 0,79	DE 0,80 A 0,82	DE 0,83 A 0,84	DE 0,85 A 0,86	ACIMA DE 0,87	TOTAL AMOSTRAS
Safra 11/12	0	0	0	13.346	114.975	126.235	14.887	269,444
Safra 12/13	0	0	0	8.835	92.896	56.559	1.150	159,440
Safra 13/14	0	0	1	32.077	172.009	118.012	3.894	325,993
Safra 14/15	0	0	0	5.412	139.704	236.302	12.186	393,604
Safra 15/16	0	0	0	405	42.493	233.262	61.362	337,522
Safra 16/17	0	0	0	2.384	96.550	206.139	84.262	389,335

## ÍNDICE DE FIABILIDADE (SCI)

■ Safra 11/12 ■ Safra 12/13 ■ Safra 13/14 ■ Safra 14/15 ■ Safra 15/16 ■ Safra 16/17



Safra	ABAIXO DE 100,00	DE 100,00 A 109,99	DE 110,00 A 119,99	DE 120,00 A 129,99	DE 130,00 A 139,99	DE 140,00 A 149,99	ACIMA DE 150,00	TOTAL AMOSTRAS
Safra 11/12	165	2.056	14.671	74.557	117.326	52.809	7.817	<b>269.444</b>
Safra 12/13	135	875	9.657	47.812	64.655	31.298	5.008	<b>159.440</b>
Safra 13/14	9	1.825	22.935	109.429	133.595	51.482	6.718	<b>325.994</b>
Safra 14/15	138	4.691	44.567	147.327	144.192	46.705	5.984	<b>393.604</b>
Safra 15/16	1.502	13.938	60.816	128.539	99.226	30.160	3.341	<b>337.522</b>
Safra 16/17	488	9.114	58.955	126.770	123.504	58.575	11.929	<b>389.335</b>